



A division of KP Rayner Ltd



For your KPR **Roland**® machine

# Beginners Guide

For Your **Cut2D** Software

***Roland Engraving With Confidence  
For The Funeral Director***



Rayner's is an authorised Roland dealer and a division of KP Rayner Ltd.  
Unit 5b Wedgwood Road, Bicester. Oxon. OX26 4UL.  
Tel: 01869 325 248 Email: [Tech@kprayner.co.uk](mailto:Tech@kprayner.co.uk) Website: [www.KPRayner.co.uk](http://www.KPRayner.co.uk)

## Cut2D Introduction

This guide has been designed to make funeral engraving with your Cut2D software and your Roland engraving machine simple so that you can engrave with confidence.

The first part of this training manual guides you through the process of engraving text only. To add images to your funeral plates refer to page 9.

### **IMPORTANT:**

Before you start to create your design it is important to remember that your Roland engraver will only engrave text and images that appear as 'pink' on your screen. This means that the text /image have been 'selected'. If the text /image appears as black on your screen then the engraver will not recognise it and so will not engrave it. To select the text/image simply use the cursor to point directly on to the text/image and click, this will change the colour to pink. Alternatively to make selections you can use your mouse to draw a box around the text/image you wish to select.

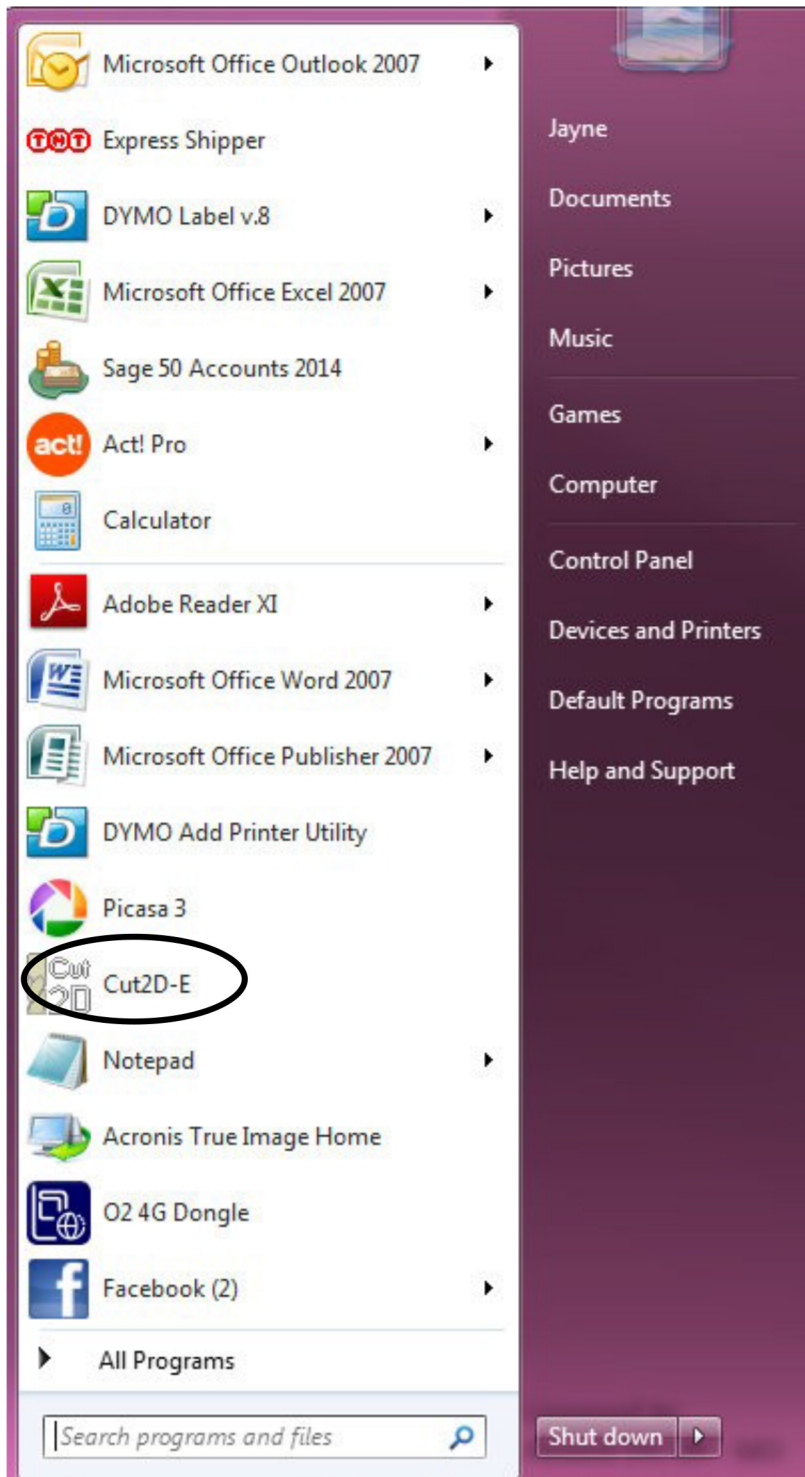
### **NOW:**

Set up your plate on your Roland EGX engraving machine and simply follow the steps on each page to guide you through the software.

## Cut2D Getting Started

From the [Start] menu, click [All Programs] and click Cut2D.  
Cut2D starts.

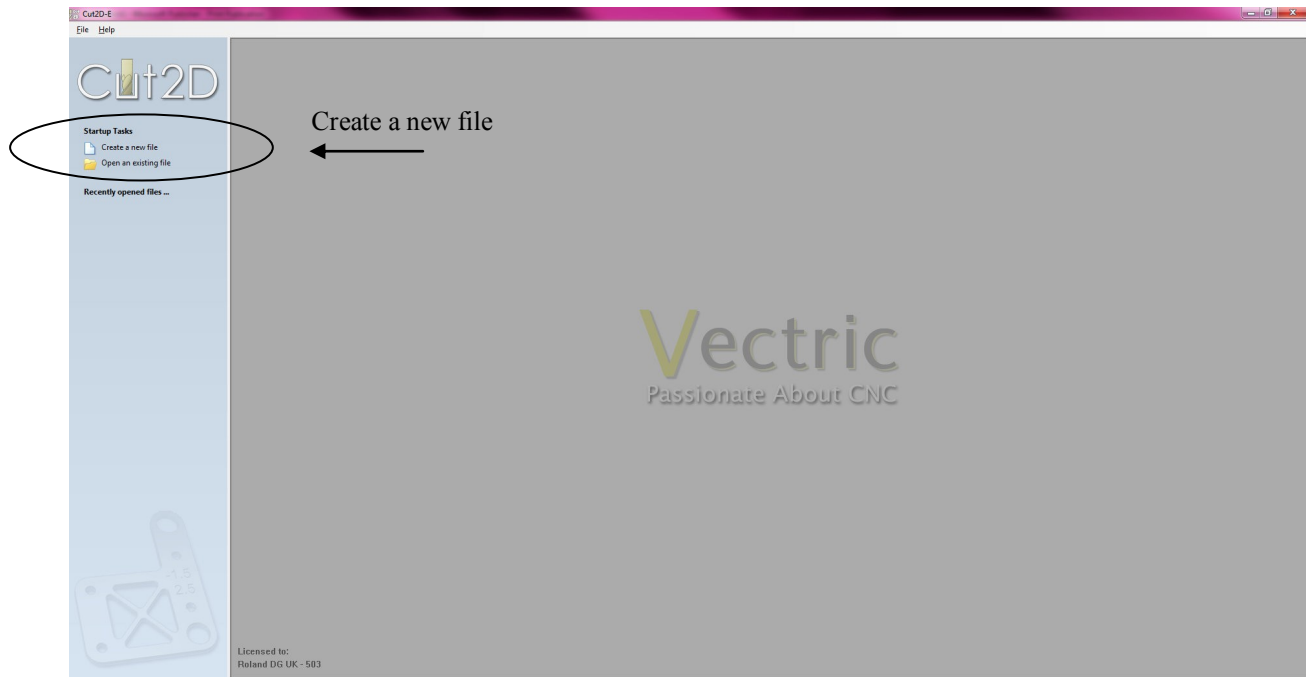
Alternatively you may have the Cut2D saved to your desktop and you can launch the software from here.



## Cut2D Opening Screen

The Cut2D opening screen.

From here click [Create a new file] which can be found on the left of the screen.



The 'Job Setup' Screen appears.

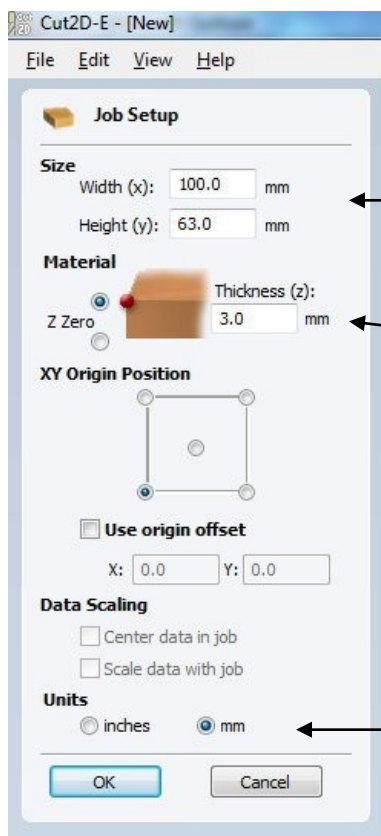
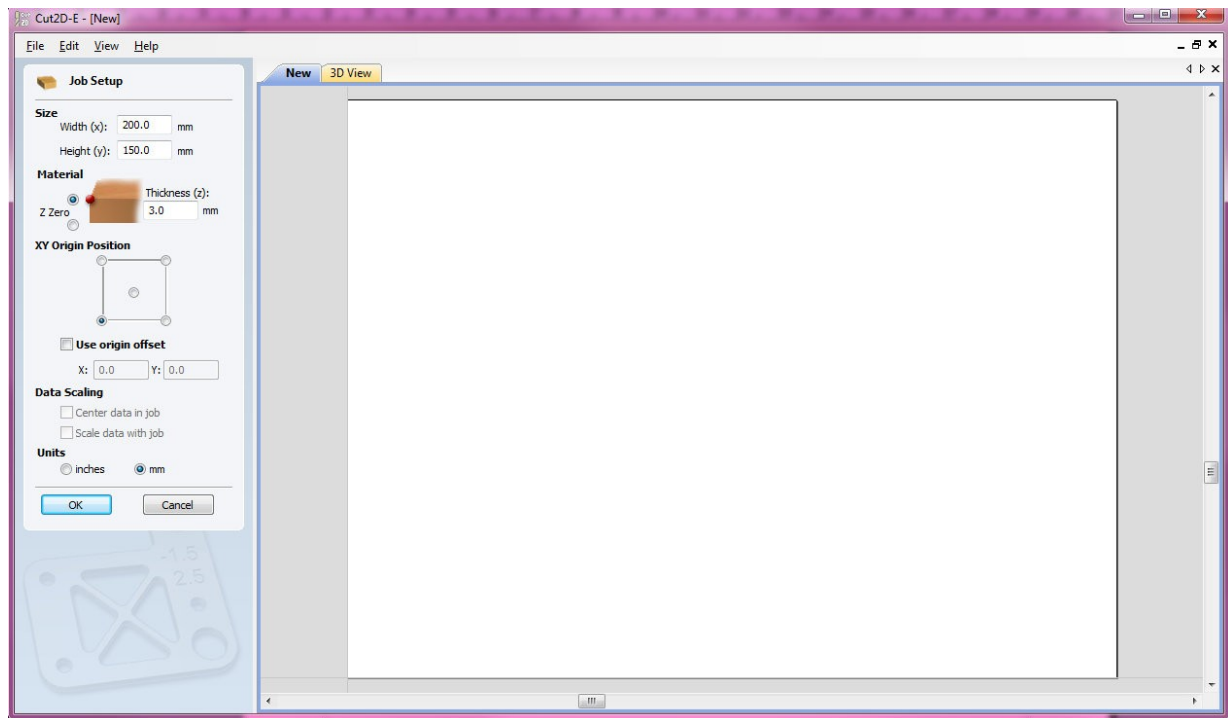
Now follow the steps in numerical order on each page.



## Cut2D Job Setup

The Job Setup Screen.

From here you can set the dimensions of the material you want to engrave.



### STEP 1:

Put the width and height of your plate here.  
For example: Coffin plate: 200 x 150 mm  
Casket plate: 100 x 63 mm

### STEP 2:

Set [Z Zero] to the top left and [Thickness] to 3 mm

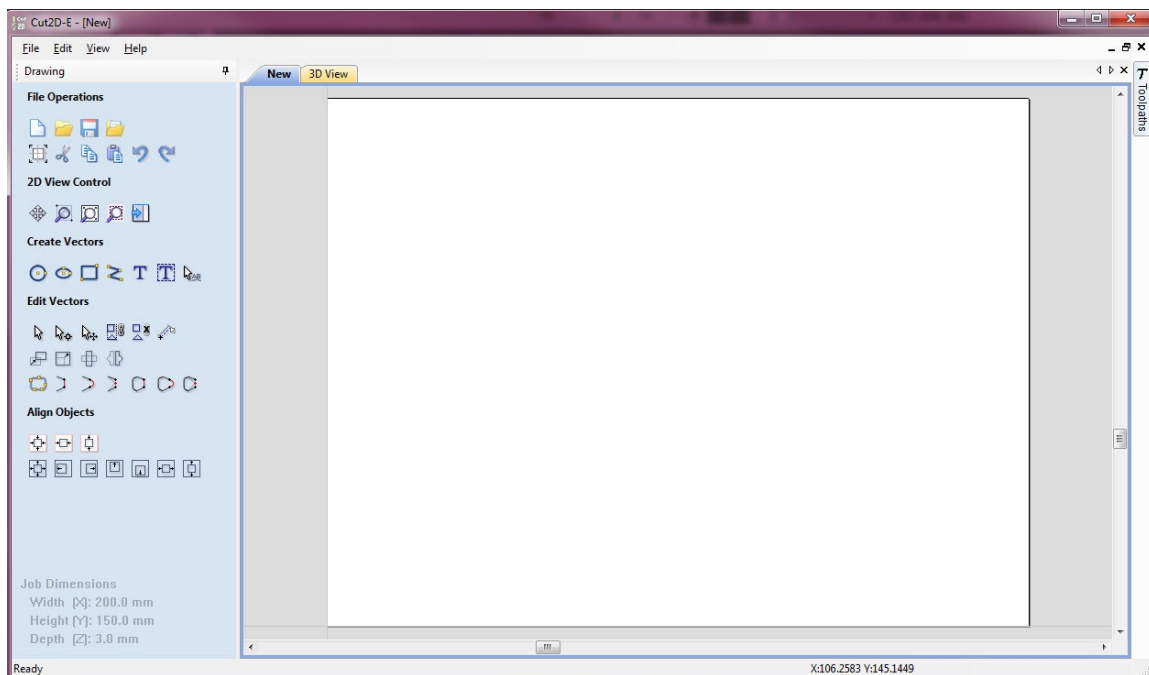
### STEP 3:

Set 'Units' to mm and click 'OK'

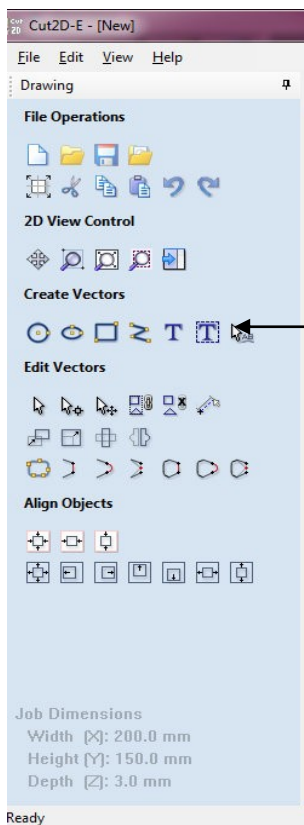
After clicking 'OK' the 'Drawing' Screen will appear.

## Cut2D The Drawing Screen

From here you can design the funeral plate with text and vector images.



Now start with your text.

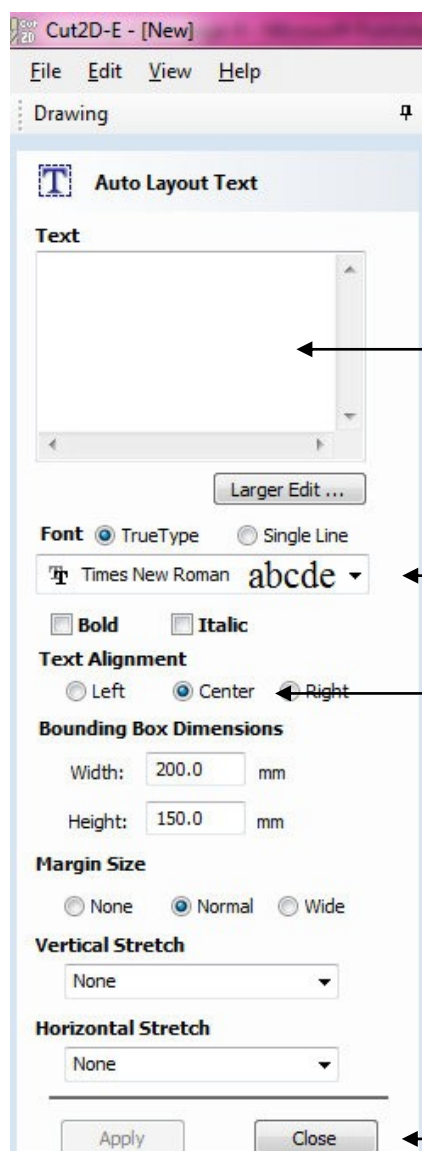
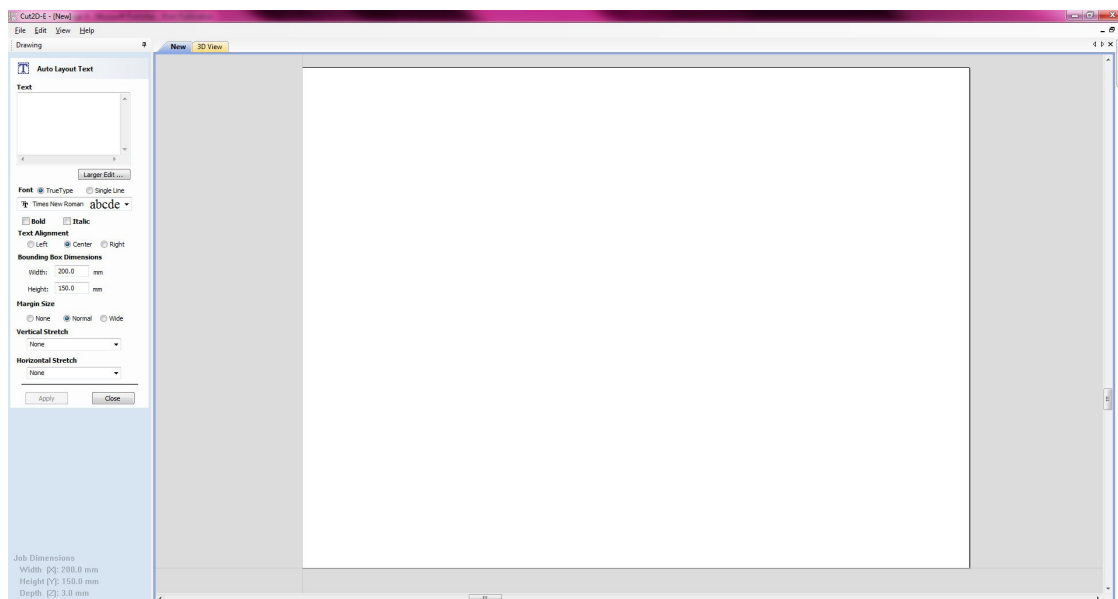


**STEP 4:**  
Select the 'T' with the dotted box.

The 'Auto Layout Text' screen will appear.

## Cut2D Auto Layout Text

From here you can type in your text.



**STEP 5:**  
Type your text in this box.

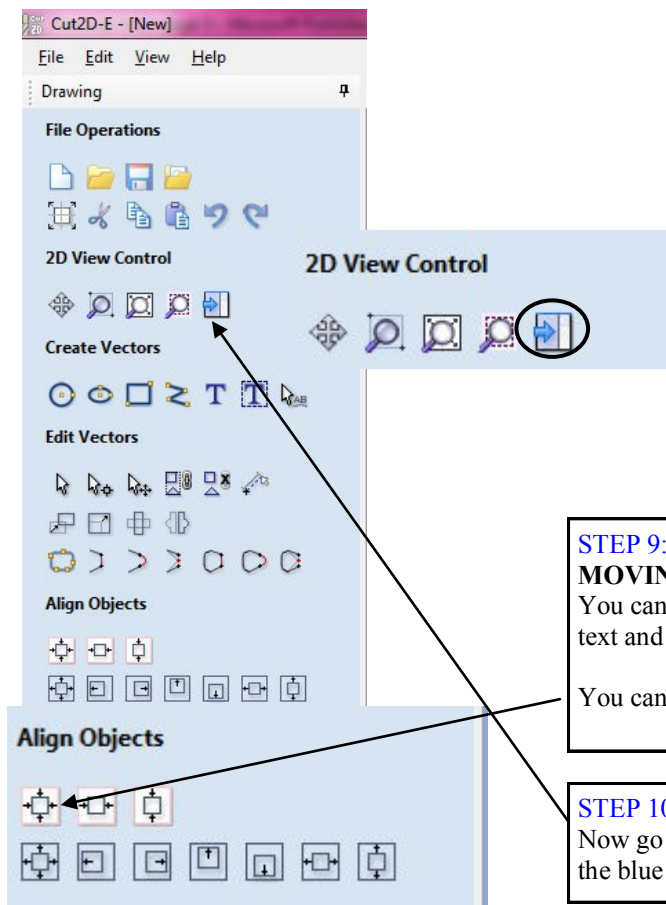
**STEP 6:**  
Select 'TrueType' font and use the scroll down menu to select your chosen font.

**STEP 7:**  
In Text Alignment select 'Center'.

**STEP 8:**  
Now click 'Apply' and then 'Close' and the 'File Operations' screen will appear.


## Cut2D Sending the job to the Roland EGX engraver

From this 'File Operations' screen you can now output the job to your engraving machine.



### STEP 9:

#### MOVING THE TEXT:

You can move the text by double clicking on the pink text and using the 'cursor move icon' 

You can centralise the text by using this box.

### STEP 10:

Now go to the 2D View control and click the box with the blue arrow as shown.

The 'Toolpath List' will appear.

## Cut2D Begin to engrave

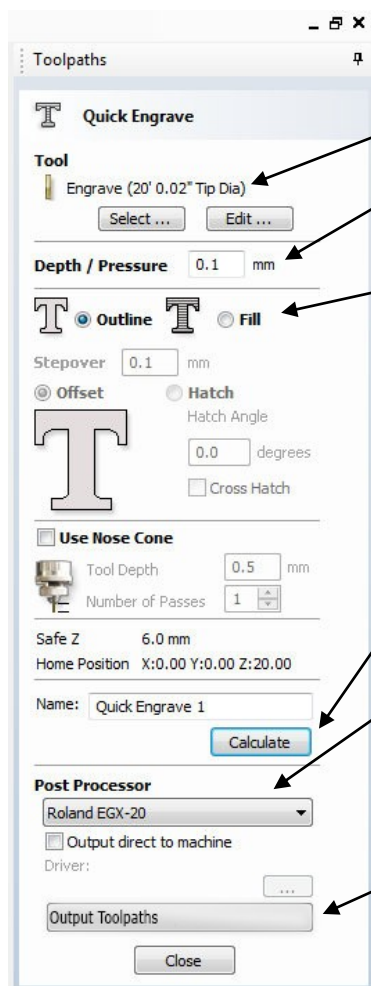
Now you are ready to start engraving.



### STEP 11:

Ensure your design appears as pink on the screen. Now in the 'Toolpath Operations' box click the 'T'

You will now see the 'Toolpaths' screen. Follow the steps in numerical order as shown below.



### STEP 12:

Tool settings: 20' 0.02 Tip  
Depth pressure: 0.1mm

### STEP 13:

Here you have the option to fill the text or only outline the text.

### STEP 14:

Click 'Calculate'. Small green boxes will appear on your design to show the toolpath.

### STEP 15:

Ensure your Roland EGX engraver is showing in this box.

### STEP 16:

Click 'Output Toolpaths'. Now go to your Roland engraver and press the 'View' button, engraving will commence. When the engraving is finished press the 'View' button again and remove the plate from the machine.

Your funeral plate engraving is now complete.

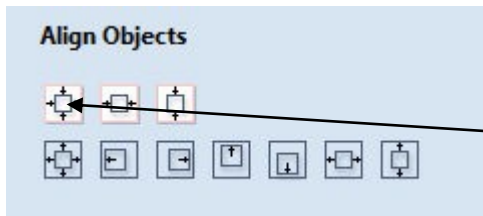
## Cut2D Make Changes to Text

Once you have typed in your text you may wish to re-position or re-size it in order to make space for an image.

1. To begin go back to page 6 of this manual. Type in your desired text as per the instructions and now click 'Apply' and then 'Close'. Now return to this page and continue each instruction.

2. The 'Drawing' screen will appear and show your text in 'pink'. **In order to place an image onto your design you may wish to adjust your text to make space for the image.**


**To adjust the text size:** Use your cursor to click directly on the text to ensure it is pink. Now double click on the text. Boxes will appear around the text. Take your cursor to one of the boxes and a white arrow will appear. Use this arrow to stretch or shrink your text. The white arrows in each corner will stretch or shrink the text whilst keeping the same proportions. The white arrows to each side of the text will widen or make the text more narrow.

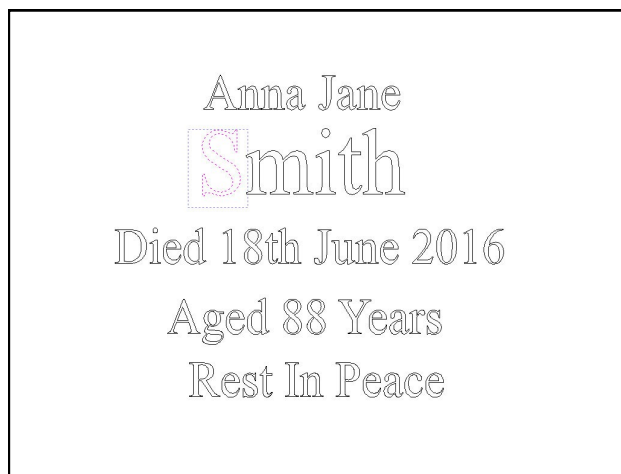


If you wish to keep the text **central** then go to 'Align Objects' and click the box as show here:

Click this box to keep your selected text central

**To adjust one line of the text:** You may wish to change just one line of the text. In the example below the surname 'Smith' is larger than the rest of the text. To make changes to just one line of text: Click directly onto the pink text, now right click and select 'Break Text Block Into Lines'. Now you can change the size and position of the individual lines.

**To adjust one letter:** You may wish to change the size and position of just one letter. In the example below the 'S' has been selected. To do this: Make sure you have already selected 'Break Text Into Lines' now click on the letter you wish to change now right click and select 'Convert Text To Curves'. You will notice that the text now takes on a 'dashed' appearance as shown in the example below. Click away from the text so that it becomes black, now click on the letter you wish to alter (See below) now double click on the letter and the move cursor  will appear allowing you to re-size or move individual letters.



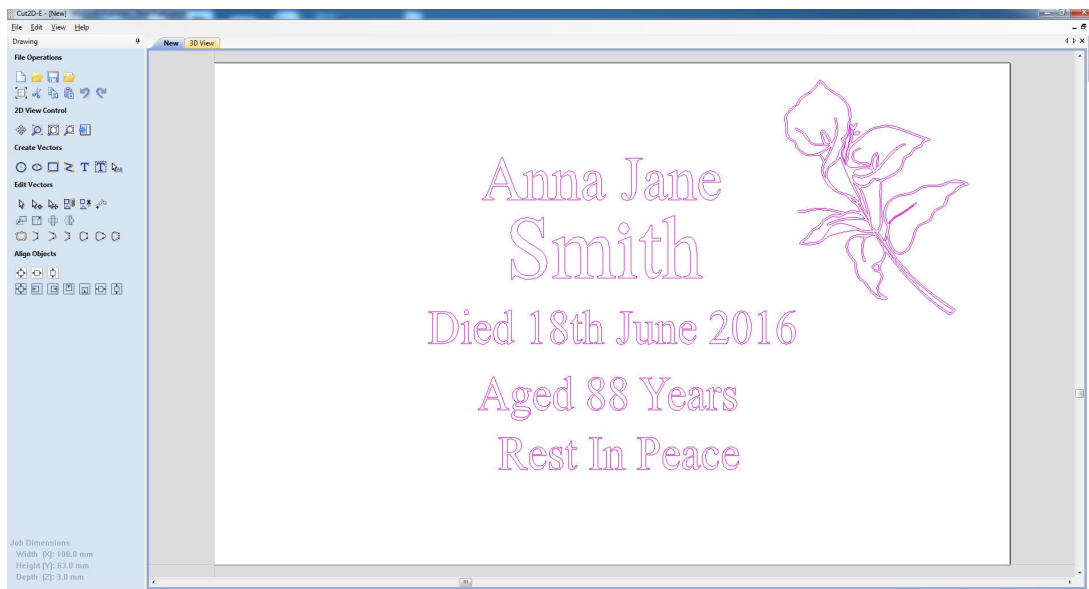
When you are happy with your text layout use your mouse and cursor to draw a box around ALL of the text then right click and select 'Group Objects.'

**To add images go to page 10.**

## Cut2D Add A Vector Image

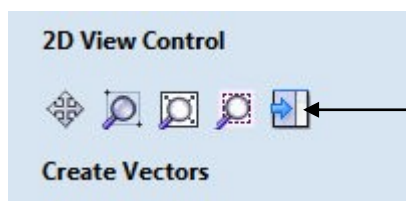
Now you have made any changes to your text and ‘right clicked’ to ‘Group Objects’. Your design is ready to import an image.

1. In the drawing screen, go to the top left of the screen and click ‘File’, then ‘Import’. Find the ‘Clipart Folder’, open it and click on your chosen image.
2. The image will appear on your screen.
3. To re-position the image or change it’s size; use your mouse and cursor to draw a line around the whole image, now click on it and from here you can move the image and adjust the size. When you have finished your adjustments, right click on the image and select ‘Group Objects’.
4. When you have finished your design complete with text and the image, use your mouse and cursor to draw a line around the entire design, now right click and select ‘Group Objects’.



In the example shown above, the surname ‘Smith’ has been selected and made larger. The lily has been imported and positioned. The entire design has been selected and appears as pink. This design is now ready to be engraved.

5. When your design is complete and you are ready to engrave go to the ‘2D View Control’ in your control panel. See below.



**Now send your artwork to your Roland engraver.**

To send this ‘engraving job’ to your Roland engraver click this box as show here.

Now to finish **go back to PAGE 8** and follow all of the steps.